

SIGNALS TO BE USED BY THE TECHNICAL OFFICIALS

1. START OF THE MATCH



Raise one hand horizontally upwards and the other hand parallel to the mid line.



Simultaneously bring the other hand down and start the Stop & go watch.

Long and short whistle

2. OUT OF BOUNDS



Raise both hands, palms facing towards the body and show the action of away.

Long Whistle

3. BREAKING OF CANT

Place the palm in front of the throat

Sharp Short Whistle



4. CALLING THE RAIDER BACK



Pointing the thumb finger at shoulder level towards the directions, in which the raider should move.

Two Short Whistles

5. BOTH OUT



Raise both the hand side wards at shoulder level by pointing thumb upward

Long whistle

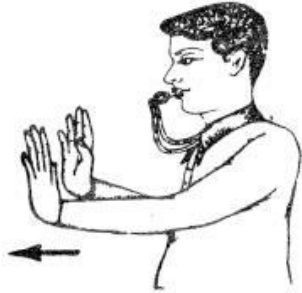
6. TO DECLARE POINTS & OUTS



Raise one hand to indicate number of outs or points with fingers and indicate the team which scored with the other hand pointing horizontally

Long whistle

7. PUSH OR PULL



Show the action of Push or pull with both hands towards the player on whom the foul is given

Sharp short continues whistle

8. OPERATING SCISSORS OR DANGEROUS PLAY



Indicate interlocking of fingers with both hands.

Short continues whistle till struggle is stopped

9. WARNING



Show the index finger towards the player / team/ coach who is to be warned & show the card & record

Short continues whistle till the player reports

10. TIME OUT / TEMPORARY SUSPENSION



Form T shape with both palms

A Long and Short Whistle

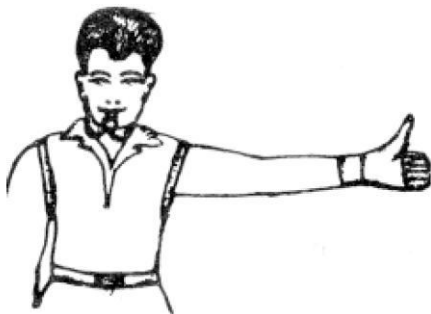
11. STOP OR WAIT

At the time of struggle or fouls wobbling action with the palm to stop

Blow Sharp Short Continuous Whistle till the Struggle or Foul is stopped



12. BONUS POINT



Indicate the thumb upwards towards the side which scored the Bonus

No whistling is required unless there is a struggle

13. HALF TIME & SIDE CHANGE



Cross the hands in front of chest to indicate change the sides

Long whistle

14. MATCH IS OVER



Raise both hands from side wards and bring them closer simultaneously with the whistling

Long Whistle